

## Splicing of Integrated Tracer Wires in Duct Assemblies

Recommended material:



Connector,  
3M Scotchlok UY2

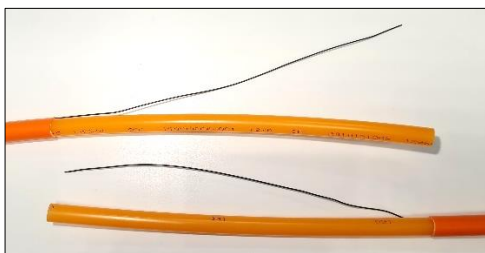


Mastic tape

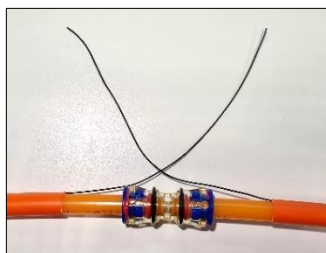


Electrical tape

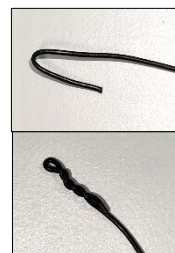
Instruction:



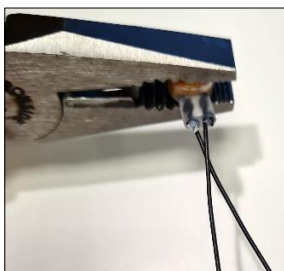
Remove the outer sheath approximately 25 cm to get sufficient length of tracer wire to work with.



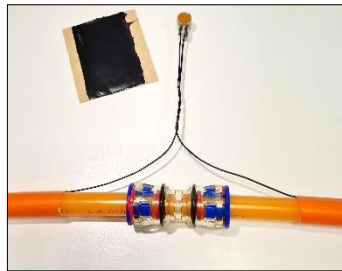
Cut the microducts and connect them with the correct connector.



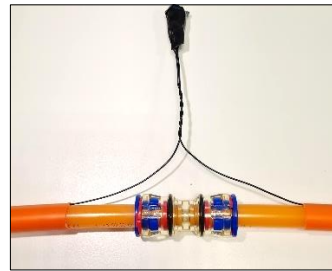
The single ducts have a thinner tracer wire and shall be folded and twisted.



Push the conductors all the way into the connector. Lock the conductors by pressing the orange tab with a pair of combination pliers.



To reduce the risk for the conductors to be pulled apart in case an unexpected force occurs in the duct, it is recommended to twist the conductors together.



For better protection against water ingress, cover the whole connector part with mastic tape. Compress the mastic for a while to start the vulcanization. Cover with electrical tape.